

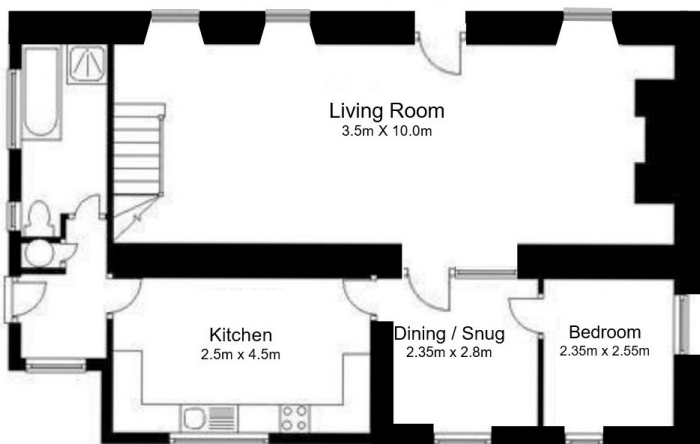
Winter Cottage

History and construction

Formerly thought to have been a dairy farm dating back to the early to mid 1800's. Winter Cottage was purchased part renovated in 1973 and the renovation continued to the present day. Construction is of local stone with the rear kitchen being single skin hollow cavity concrete "breeze" blocks and the bathroom / rear porch being standard cavity concrete block. The cedar shingle roof tiles were replaced with fibre cement "slates" in about 1995. The property would benefit from further development the most obvious being a <math>< 2.0\text{m}</math> extension to the kitchen with a bedroom and bathroom above and it is believed this would be permitted development. Council tax band D. Mains water and electricity with septic tank drainage shared with the Annexe.



Ground Floor



First Floor

